



## Good News Bulletin- Edition 30—November 2023

Welcome to the Land, Planning and Development Federation Good News Bulletin.

Published on a monthly basis the Federation wishes to recognise and celebrate the good work achieved by our members.

### Promotion portfolio continues to grow for Catesby Estates

It's been a bumper few weeks for the Catesby Estates land team with four new sites added to their ever-expanding land promotion portfolio. They secured four greenfield sites located in Essex, East Sussex, Warwickshire and Buckinghamshire, a total of 82.6 acres and with the potential to deliver in the region of 500 new homes and a wide range of community facilities.

All the sites are located in highly sustainable locations in close proximity to a wide range of services and facilities.

Myron Osborne, David Harper, Richard Waring and Andy Wright worked closely with landowners and their agents to get these deals over the line including; Richard Foxon and Piers Beeton at Newton LDP, Jeff Paybody and Henry Martin at Howkins & Harrison, and Sam Skinner at Gerald Eve. Phil Medford at Eversheds dealt with the legals on Catesby's behalf.

### Volunteering at Forest of Marston Vale

Last month the Catesby Estates team came together for a day of volunteering at the charity operated Forest of Marston Vale in Bedfordshire.

They have a long standing relationship with the charity having sponsored and attended their family forest fun days as part of their community engagement work for their land promotion site in nearby Marston Moretaine.

The Forest of Marston Vale covers 61 square miles between Bedford and Milton Keynes and was designated as a community forest in the early 90s.

After a safety briefing, they were assisting rangers with scrub clearance and helping to maintain a varied age structure within the habitat which is important for reptiles and Invertebrates such as butterflies and beetles.



They concluded with a couple of hours of teambuilding at nearby Treetop Extreme at Willen Lakes, scaling the multi-level high ropes course and finishing with the free-fall experience – something that definitely got the heart pumping!

## Catesby Estates

part of Urban&Civic

# A Successful November for Mintridge Strategic Land



**MINTRIDGE**  
STRATEGIC LAND



Mintridge Strategic Land has completed on the final legal agreements on an allocated site extending to almost 16 acres in Arlesey, Central Bedfordshire.

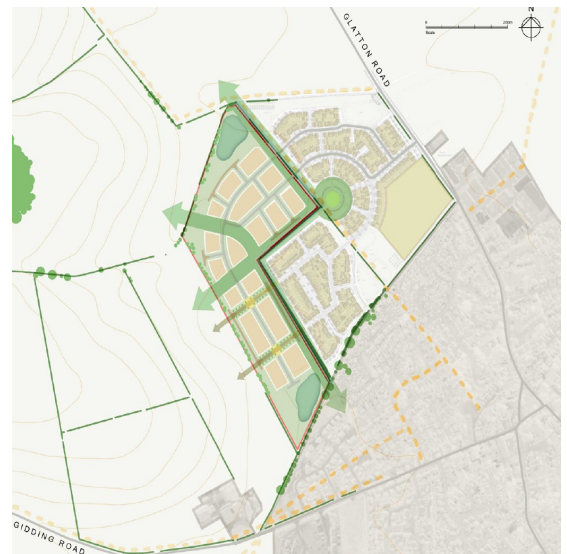
Thomas Cardwell, Managing Director at MSL said “We are looking forward to working with the local planning authority to bring forward a comprehensive and sustainable scheme through an outline planning application for 103 homes and a 64 bed care home along with a separate but complementary detailed planning application for 22 affordable homes on behalf of our partner Grand Union Housing Group..”

With thanks to the team at Shakespeare Martineau - David Wells, Joe Soul, Desh Patel and Nikki Beers from Faxton Land & Property.

MSL have signed an option agreement on almost 13 hectares of strategic land in Sawtry, Huntingdon. The site is well connected to the existing settlement and the land to the east has recently received a planning consent for up to 340 homes.

Thomas Cardwell Managing Director at MSL said: 'We are looking forward to bringing this site forward through the local plan process for housing and community facilities. Securing this site further establishes our position in the region as a strategic land promoter, we are privately owned and are always on the look out for new sites.'

We have submitted in the call for sites process with our consultants Louise Newcombe at DLP Planning Ltd and Julian Buttell at DCa architects - David Coles architects.



We're really pleased to announce Jenny Ellender has been promoted to the role of Planning Director! In her time with the business, Jenny has shown considerable aptitude in her role along with demonstrating unfaltering leadership skills.

Jenny has a Masters in Town Planning and became a accredited member of the RTPI in 2010. She has worked on a range of residential and commercial projects, from small and complex developments to larger estate regeneration and masterplanning.

# Design Award-nominated site at Fairford goes to market



Gleeson Land is delighted to announce our development for 87 dwellings in the village of Fairford, in the Cotswolds, which has recently launched onto the market after achieving planning consent last month.



The Gleeson Land development was shortlisted for a National Building with Nature Award that is fast becoming recognised industry-wide.

The team put together a carefully designed application to be not only thoughtful of its surroundings but to

ensure that high-quality green infrastructure was also delivered with the project. Gleeson is proud that the project secured this accreditation and was crowned runner-up to a worthy winner.

Gleeson Land is now actively marketing the site for sale



## Growing Gleeson Land

Gleeson Land has appointed a new Land Buyer, Kai Shadforth.

Kai joins the Gleeson Land with a breadth of land experience and will be looking to acquire strategic opportunities in the South East of England. We are delighted to welcome him to the team and wish him all the very best for his career at Gleeson Land.

Our Research and Analytics Team has also grown to include Ben Brody and Max Mursell as Graduate Land and Planning Analysts, joining Dominick Veasey, Head of Research and Analytics.

Dominick comments *“Using data to inform our land and planning decisions is a fundamental part of our growth strategy. Ben and Max are great additions to the team, and have certainly hit the ground running having already helped prepare evidence for appeals being progressed by our planning colleagues, whilst also supporting the land team with timely intelligence to inform numerous new site opportunities.”*

**gleeson** land

**Kai Shadforth**  
Land Buyer

**Max Mursell**  
Graduate Land and Planning Analyst

**Ben Brody**  
Graduate Land and Planning Analyst

# L&Q Estates provides road safety advice at Milton Keynes' newest primary school

Pupils at Milton Keynes' newest primary school received valuable lessons in road safety as part of L&Q Estates' continued drive to promote safe travel. Leading land promoter and developer L&Q Estates delivered a talk to pupils at Watling Primary School, on Simmental Way.

The talk – which was led by Principal Designer Marcus Hill and Head of Construction Simon Taylor – formed part of the school's Road Safety Week and saw L&Q Estates donate beanie hats with torches and reflective wristbands to help children stay safe at night over winter.

Watling Primary School is the third new primary school in the Western Expansion Area and welcomed its first pupils this term. L&Q Estates is the master developer of the Western Expansion Area, which will create an 850-acre sustainable community on the west side of Milton Keynes.



Marcus Hill said: "We were delighted to join the school's assembly and help to teach children about why road safety matters, how to recognise risks, and how they can manage their personal safety. Our community is hugely important to us which is why we've been working with the school to make the school access safer, which has seen traffic speeds reduced along Shetland Drive to 20mph.

"We've also finished work on a dedicated safe school route along Shetland Drive which segregates construction traffic away from school traffic. We hope the children enjoy using their new road safety equipment on their journeys to and from school."

Vikki Pegg, Headteacher at Watling Primary School, added: "Our collaborative work with L&Q Estates started well in advance of the school opening and has been an important aspect of our commitment to promoting safe routes to school for our children and families.

"It was wonderful to welcome Marcus and Simon to our Road Safety Awareness assembly and the children of Watling Primary School were delighted to receive their hats and wristbands. We look forward to continuing our positive working relationship with L&Q Estates as the local area around our school is developed further."



## Richborough appoints three more staff

Richborough has welcomed three more staff to its Birmingham headquarters. They are:

### **Karuna Bhatia: People HR Business Partner**

Karuna's role is to enhance and build on the employee journey experience through recruitment, development, and employee relations, and to further develop Richborough's culture and values.



### **Lamees Ali: Finance Analyst and Data Manager**

Lamees facilitates the collection and analysis of data across Richborough to optimise efficiency, enable growth and deliver best value for clients.

### **Tom Lowbridge: Lead Creative Designer**

Tom is responsible for Richborough's creative brand identity and marketing collateral across our on and offline platforms.

# Residential planning application submitted in South Gloucestershire

Richborough has submitted an outline planning application for up to 75 new homes in Tytherington, South Gloucestershire.

Our plans for the 11.78-acre site off Duck Street propose a range of house types and sizes, with 35% affordable housing provision, as well as new areas of public open space including a new community orchard and children's play area. The site is located close to local facilities.

Alex Anderson, Regional Director (South West) said: "We have submitted this planning application following public consultation with the community, the Design Review Panel and South Gloucestershire Council.

"A significant amount of technical work has been carried out to assess the impacts of our scheme and to maximise the benefits for new homeowners and the existing Tytherington community. We are seeking to create a high-quality development that we can all be proud of.

"The advice we have received from the Design Review Panel has been very helpful and has helped to shape the production of a design code, as can be seen in the Design and Access Statement, that has been expertly produced by Nineteen47. We look forward to working with South Gloucestershire Council and its consultees to seek a positive outcome regarding the planning application, and expect to start marketing the site to prospective developers in the spring of 2024."

For more details contact [alex.anderson@richborough.co.uk](mailto:alex.anderson@richborough.co.uk)



## New promotion agreement for land in Cheshire

Richborough is pleased to have entered into a promotion agreement with a landowner to bring forward a residential development of circa 130 homes in Congleton, Cheshire. The 13.5-acre site is located on the A534, south of Sandbach Road, close to local schools, parks and services making it a logical extension to the town of Congleton.

Joe Jones, Midlands Regional Director said: "With its close proximity to local facilities, within a town that has proved to be an established and desirable housing market, we believe the site is an excellent option to be included within the emerging Cheshire East Local Plan review."

"We look forward to promoting the site through the local plan process and obtaining planning permission and securing a development partner at the earliest opportunity."



For more details contact [joe.jones@richborough.co.uk](mailto:joe.jones@richborough.co.uk)

 Richborough